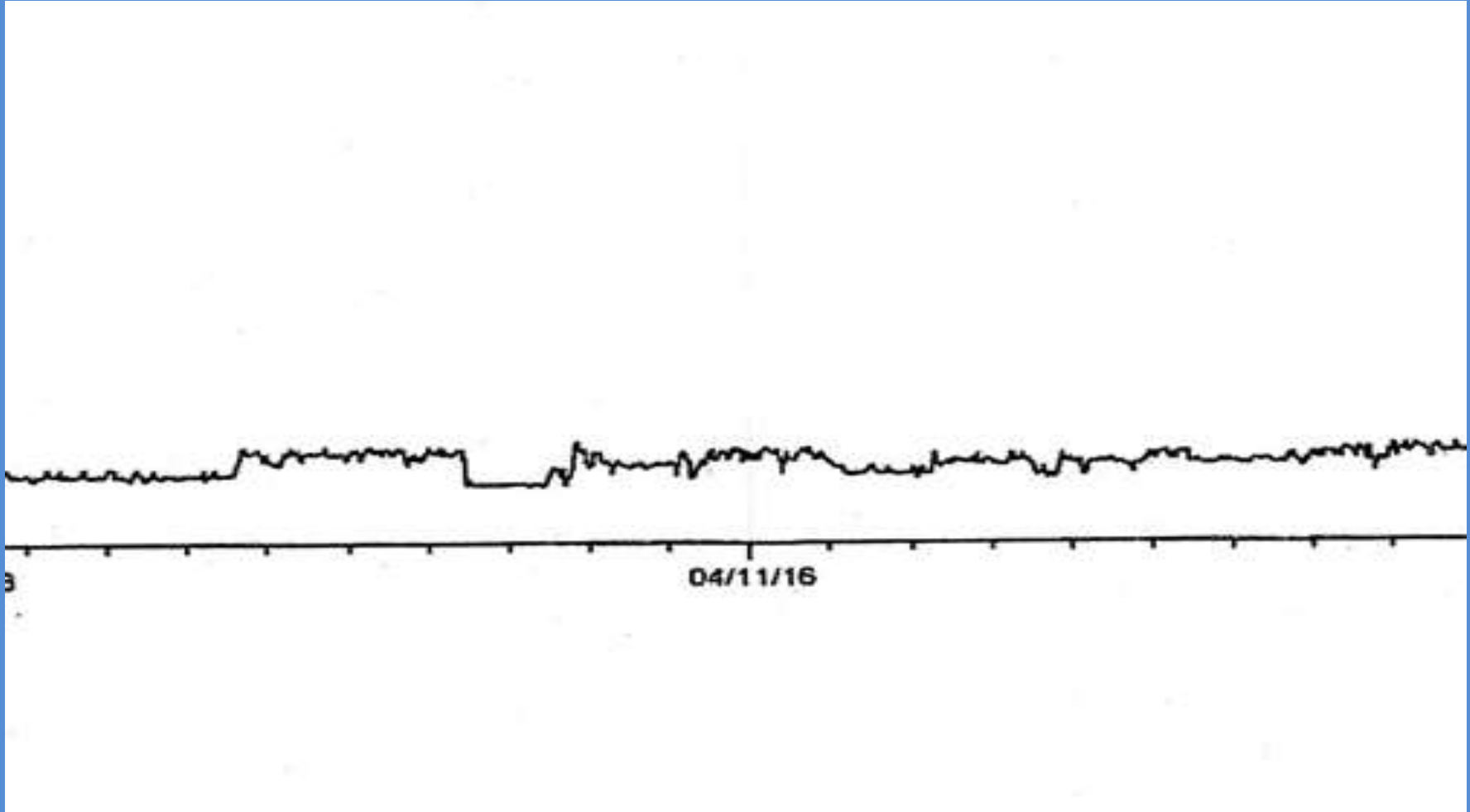


Reducing Superchill Impact in Bras d' Or Lakes

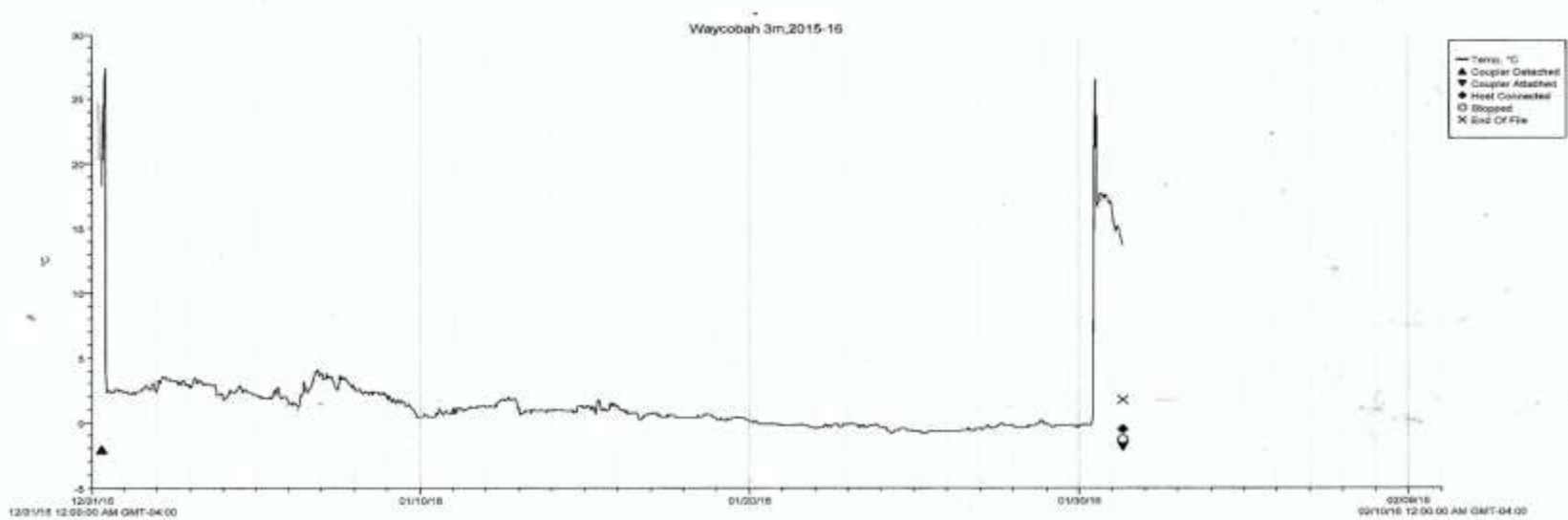




Temperatures at 8m



Whycocomagh 3m 2016

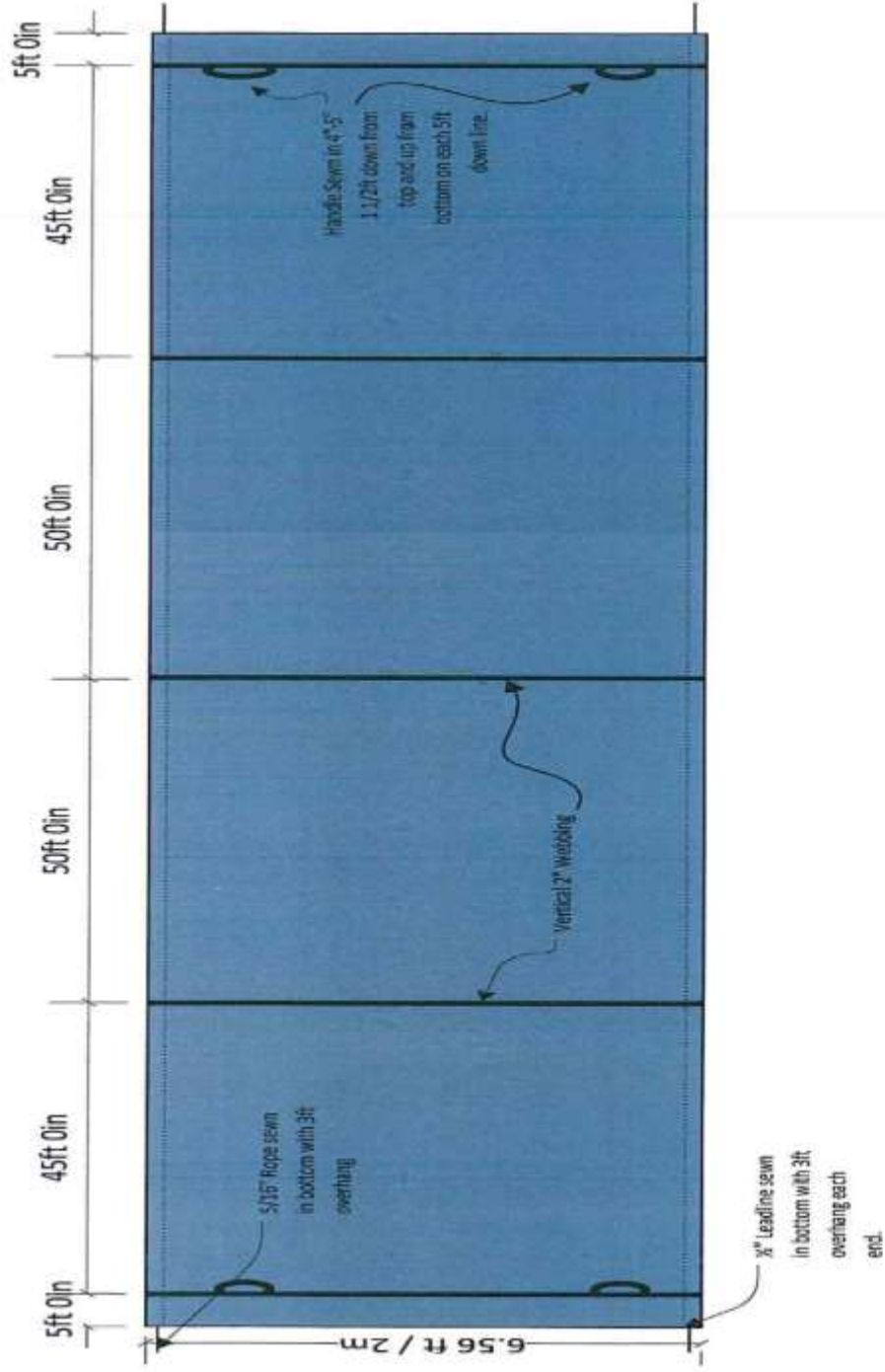


2016, 1meter

- In the winter of 2016 the coldest temperatures
- Started at one meter on Jan.10. at $-.102^{\circ}\text{C}$..
- It dropped to $-.437$ on January 16
- On January 24 the temperatures started rising above zero.
- Rising temperatures under the ice thru the winter is normal

2014

- In late December and early January due to delayed ice cover from high winds accompanied with colder than normal temperatures.
- The result was superchill in the shallow water resulting in a few losses. The deep locations allowed the fish to go to warmer temps resulting in fewer losses.



Material: 18oz Blue PVC 60mx2m

1/2" Leadline for Bottom Rope

5/16" Polyrope for Top Rope

Webbing 2" wide for handles and vertical supports

| | | | |
|------------------|-----------|---------------------------|----------------|
| PVC SKIRT | | Rainbow Net & Rigging Ltd | |
| | | Customers Name | |
| Start Date: | June 13th | DUE DATE: | Invoice Number |
| Sales Person: | SS | REV | A |
| | | SHEET | 1 OF 1 |

Tarpaulin Skirt





Upwellers working



16 Polar Circles within Tarp



Winter wharf



Conclusions

Tarpaulin skirt at 2 m depth does not reduce oxygen levels but does protect from surface superchill

Tarpaulin increases efficiency of ice prevention for upwellers

Locate your thermocline and place deep upweller in this zone and another above

Important to protect small fish from impeller damage by use of vexar.